

FF 3090 Thermowell for cover flange

Thermowell

Design Drilled bar stock for cover flange mounting
Made from one piece bar, forging, or bar with welded flange

Materials SS 316 - (Wst 1.4401) standard

Stem / Shaft

Diameter 20 mm straight or a reduced tip (L=78mm x d=12 mm)

Bore Stepped 8.0mm to 6.5 mm at the tip side

Bottom thickness 5.0 mm

Flange facing Flat Face Serrated to ASME B16.5

Cover flange

Separate available To specify

Pipe class DN25, DN40 or DN50

Class 150, 300, 600, 900/1500 and 2500Lbs

Dimensions

Insertion length To specify

Flange size 51mm (DN25), 73mm (DN40) or 92mm (DN50), To specify

Options

Other materials and dimensions

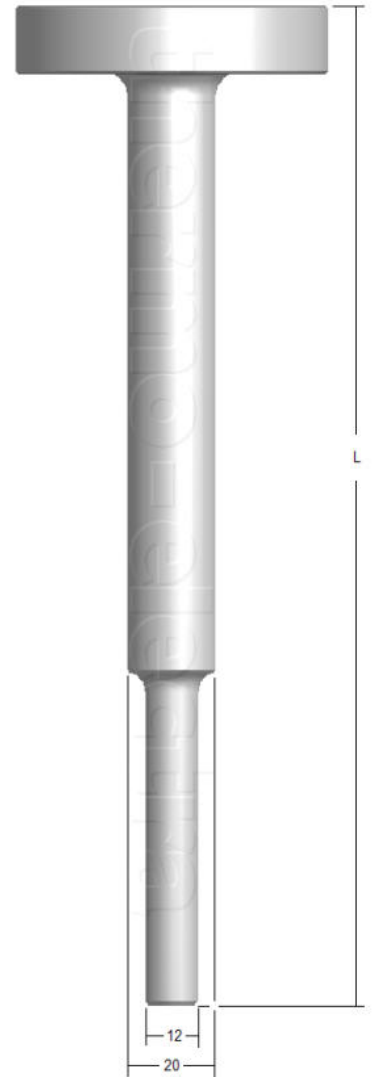
Fully machined from bar, no weldings

Knurled tip

Protective coating, PTFE, Halar, Stellite etc.

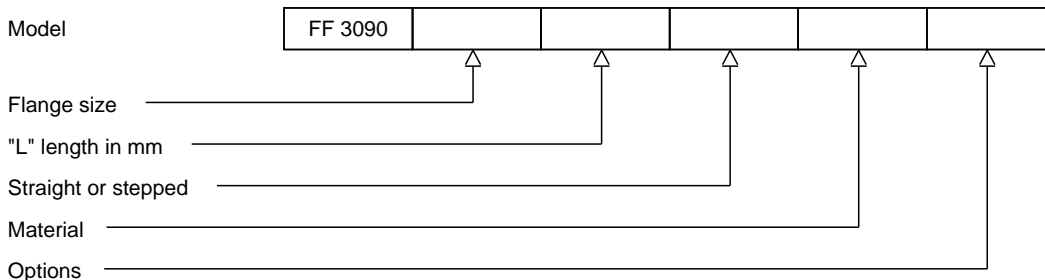
Tagging

Wake frequency calculation



Ordering code

*This datasheet is purely indicative, build-up of model code may vary from this datasheet.



H3-1 Rev.0 7/07



thermo-electra
temperature sensor solutions

Thermo Electra B.V.
Weteringweg 10
2641KM Pijnacker
The Netherlands

Phone +31 (0)15 - 3621200
Fax +31 (0)15 - 3694082
Email sales@thermo.nl
http://www.thermo-electra.com

