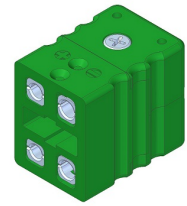


TE1010D Standard jack dual circuit



Applications

Connector Connector for thermocouple and RTD circuits. Is very well suited for 4-wire RTD-'s. Pin design ensures good contact even in demanding applications

Construction

Temperature limit Maximum 220°C

Design Rugged one body design with central cover screw for quick wiring

Body material Glass filled thermoplastic body with original thermocouple material pins and springloaded inserts

Pins Polarized pins ensure proper connection

Molded barriers Prevent short circuit

Termination Stainless Steel screws with Phillips head

Wire size

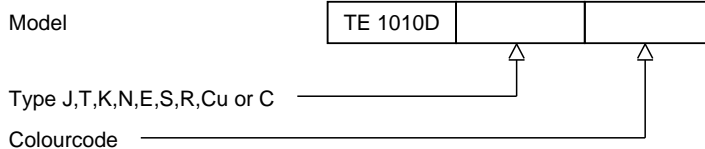
Accepts wires up to 1.6mm
Maximum cable diameter 8.0mm

Colourcode

Available in all colour code standards incl. NFE, BS, JIS, etc

Ordering code

*This datasheet is purely indicative, build-up of model code may vary from this datasheet.



H9-1 Rev.0 7/07



thermo-electra
temperature sensor solutions

Thermo Electra B.V.
Weteringweg 10
2641KM Pijnacker
The Netherlands

Phone +31 (0)15 - 3621200
Fax +31 (0)15 - 3694082
Email sales@thermo.nl
<http://www.thermo-electra.com>

