



## LHC 650

The Leyro Portable dry well temperature calibrator suitable for temperature calibrations, between 40°C ... 650°C, offers a versatile solution for calibrating thermocouples and RTD's in industrial environments, offering an excellent performance in stability and uniformity, as well as a fast response time. The LHC 650 is easy to use, thanks to its compact and light weight design. Thanks to the large size of the insert, it has a large multi hole capacity and can calibrate a large number of thermocouples at the same time. The diameter of the Dry Block is Ø 27 mm and 165 mm of depth



### APPLICATIONS

On-site calibration  
Maintenance and Service  
All kind of Industry  
Machinery Construction

### HIGHLIGHTS

Fast , Compact and Light  
High Calibration Capacity  
Insert Ø 27mm length 165mm  
Different types of inserts exchangeable  
Temperature Range: 40°C...650°C  
Stability:  $\pm 0,1^{\circ}\text{C}$   
Warranty: 3 Years



#### General Information

Easy and intuitive temperature controller with 4 digits and a resolution of 0,1  
Integrated TC probe for reference temperature measurements  
Accuracy:  $\pm 0,4^{\circ}\text{C}$   
Temperature Stability:  $\pm 0,1^{\circ}\text{C}$   
Uniformity :  $\pm 0,1^{\circ}\text{C}$



## Technical Data

Operating Temperature Range(°C)	40 ... 650°C
Accuracy	± 0,4 °C
Stability:	± 0,1 °C
Resolution	± 0.1°C
Uniformity	± 0,1°C
Temperature Control	Internal TC
Calibration Volume	Ø 27mm x 165 mm (insert exchangeable)
Heating Time	From 50 to 600 °C: 20 Minutes
Cooling Time	From 600 to 100 °C 35 Minutes
Housing and assembly	Portable
Dimensions (mm)	190 x 270 x 428 mm
Weight (kg)	9 kg approx.
Supply	100 ... 234 Vac 50/60 Hz
Power Consumption	Max 800 W
Standar insert	B: 1 x Ø 3,2 / 1 x Ø 5 / 1 x Ø 6,5 / 1 x Ø 10,5
Opcional Inserts	C: 1 x Ø 6,5 / 1x Ø 12,5 D: 1 x Ø 4,5 / 1 x Ø 6,5 / 1 x Ø 10,5 E: 1 x Ø 15,7 F: 1 x Ø 17,5 G: 1 x Ø 3,2 / 1 x Ø 5 / 1 x Ø 7 / 1 x Ø 10,5 A: Blank (without holes).

## Scope of delivery

Basic Instrument LHC 400

Power Cord

Standar Insert: B: 1 x Ø 3,2 / 1 x Ø 5 / 1 x Ø 6,5 / 1 x Ø 10,5

Manufacturing Traceable Calibration Certificate 5 Points

Instruction Manual

3 Years Warranty against factory defects

## Optional

Communication RS 485

Trolley transport case with wheels and handle.

ISO 17025 Calibration Certificate (ENAC).

Optional Inserts: C: 1 x Ø 6,5 / 1x Ø 12,5

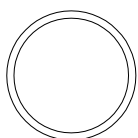
D: 1 x Ø 4,5 / 1 x Ø 6,5 / 1 x Ø 10,5

E: 1 x Ø 15,7

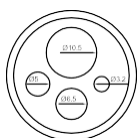
F: 1 x Ø 17,5

G: 1 x Ø 3,2 / 1 x Ø 5 / 1 x Ø 7 / 1 x Ø 10,5

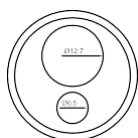
A: Blank (without holes).



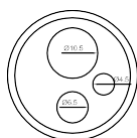
A



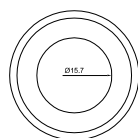
B



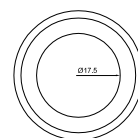
C



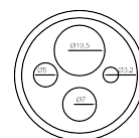
D



E



F



G



**thermo-electra**  
temperature sensor solutions

Thermo Electra B.V.  
Weteringweg 10  
2641KM Pijnacker  
The Netherlands

Phone +31 (0)15 - 3621200  
Fax +31 (0)15 - 3694082  
Email [sales@thermo-electra.com](mailto:sales@thermo-electra.com)  
<http://www.thermo-electra.com>

