



## LHC 400

The Leyro Portable dry well temperature calibrator suitable for temperature calibrations, between 40°C ... 450°C, offers a versatile solution for calibrating thermocouples and RTD's in industrial environments, offering an excellent performance in stability and uniformity, as well as a fast response time. The LHC 400 is easy to use, thanks to its compact and light weight design. Thanks to the large size of the insert, it has a large multi hole capacity and can calibrate a large number of thermocouples at the same time. The diameter of the Dry Block is Ø 60mm and 165 mm of depth



### APPLICATIONS

On-site calibration  
Maintenance and Service  
All kind of Industry  
Machinery Construction

### HIGHLIGHTS

Fast , Compact and Light  
High Calibration Capacity  
Insert Ø 60mm length 165mm  
Different types of inserts exchangeable  
Temperature Range: -40°C...450°C  
Stability:  $\pm 0,08^{\circ}\text{C}$   
Warranty: 3 Years



### General Information

Easy and intuitive temperature controller with 4 digits and a resolution of 0,1  
Integrated PT 100 probe for reference temperature measurements  
Accuracy:  $\pm 0,4^{\circ}\text{C}$   
Temperature Stability:  $\pm 0,08^{\circ}\text{C}$   
Uniformity :  $\pm 0,1^{\circ}\text{C}$



## Technical Data

Operating Temperature Range(°C)	40 ...450°C
Accuracy	± 0,4°C
Stability:	± 0,08°C
Resolution	± 0.1°C
Uniformity	± 0,1°C
Temperature Control	Internal PT100
Calibration Volume	Ø 60mm x 165 mm (insert exchangeable)
Heating Time	From 50 to 425°C: 22 Minutes
Cooling Time	From 425 to 100 °C 35 Minutes
Housing and assembly	Portable
Dimensions (mm)	190 x 270 x 428 mm
Weight (kg)	9 kg approx.
Supply	100 ... 234 Vac 50/60 Hz
Power Consumption	Max 1100 W
Standar insert	A: 1 x Ø 3,5 /1 x Ø 6,5/ 1 x Ø 8,5/ 1 x Ø 10,5
Optional Inserts	B: 2 x Ø 3,5 /2x Ø 4,5/ 2 x Ø 6,5/ 2 x Ø 8,5/ 2 x Ø 10,5 C: 3 x Ø 3,5 /3x Ø 6,5/ 3 x Ø 8,5/3 x Ø 10,5 D: 2 x Ø 3,5 /2x Ø 4,5/2 x Ø 5,5/2 x Ø 6,5/ 1 x Ø 8,5 /2 x Ø 9,5/1 x Ø 10,5 E: Blank (without holes).

## Scope of delivery

Basic Instrument LHC 400

Power Cord

Standar Insert: A 1 x Ø 3,5 /1 x Ø 6,5/ 1 x Ø 8,5/ 1 x Ø 10,5

Manufacturing Traceable Calibration Certificate 5 Points

Instruction Manual

3 Years Warranty against factory defects

## Optional

Comunication RS 485

Trolley transport case with wheels and handle.

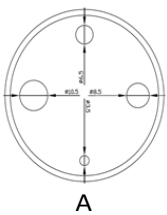
ISO 17025 Calibration Certificate (ENAC).

Optional Inserts: B: 2 x Ø 3,5 /2x Ø 4,5/ 2 x Ø 6,5/ 2 x Ø 8,5/ 2 x Ø 10,5

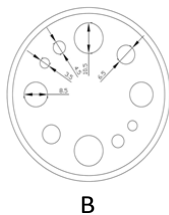
C: 3 x Ø 3,5 /3x Ø 6,5/ 3 x Ø 8,5/3 x Ø 10,5

D :2 x Ø 3,5 /2x Ø 4,5/2 x Ø 5,5/2 x Ø 6,5/ 1 x Ø 8,5 /2 x Ø 9,5/1 x Ø 10,5

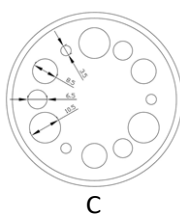
E: Blank (without holes).



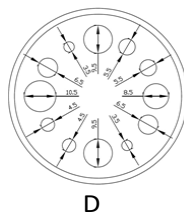
A



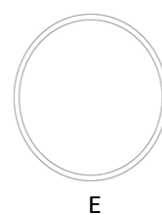
B



C



D



E



**thermo-electra**  
temperature sensor solutions

Thermo Electra B.V.  
Weteringweg 10  
2641KM Pijnacker  
The Netherlands

Phone +31 (0)15 - 3621200  
Fax +31 (0)15 - 3694082  
Email [sales@thermo-electra.com](mailto:sales@thermo-electra.com)  
<http://www.thermo-electra.com>

